



SWIFT

ESCAPE



LOVE LIFE
LOVE SWIFT



ESCAPE

The ever-popular Escape range brings freedom and the chance to take a holiday break whenever and wherever you want. With the accent on style, the Escape provides the discerning motorhome owner with a quality contemporary interior designed for those seeking refinement.

CONTENTS

PG04 HOME FROM HOME

PG06 PRACTICALITY

PG08 STYLE AND COMFORT

PG10 ESCAPE LOOKS

PG12 FABRIC OPTIONS

PG14 SMART CONSTRUCTION



CLICK HERE FOR A FULL FEATURE LIST

www.swiftgroup.co.uk/escape



ESCAPE COMFORT

- 01.** A new refreshed woodgrain internal finish for 2023, together with complementary grey French oak-effect flooring, further enhancing the welcoming interior
- 02.** The Escape's interior sees a contemporary look with streamlined furniture and high gloss cream lockers with textured metal inlay
- 03.** Ergonomic dashboard benefits from user-friendly features such as a 7" touchscreen HD colour display with Apple Car Play™.
- 04.** Driving is a pleasure with cruise control, steering wheel controls and air conditioning
- 05.** Driver and passenger captain chairs
- 06.** Space efficient lounge with Aguti seating enabling a great social space with additional travelling seats when needed

06 PRACTICALITY



CLICK HERE FOR A FULL FEATURE LIST

www.swiftgroup.co.uk/escape



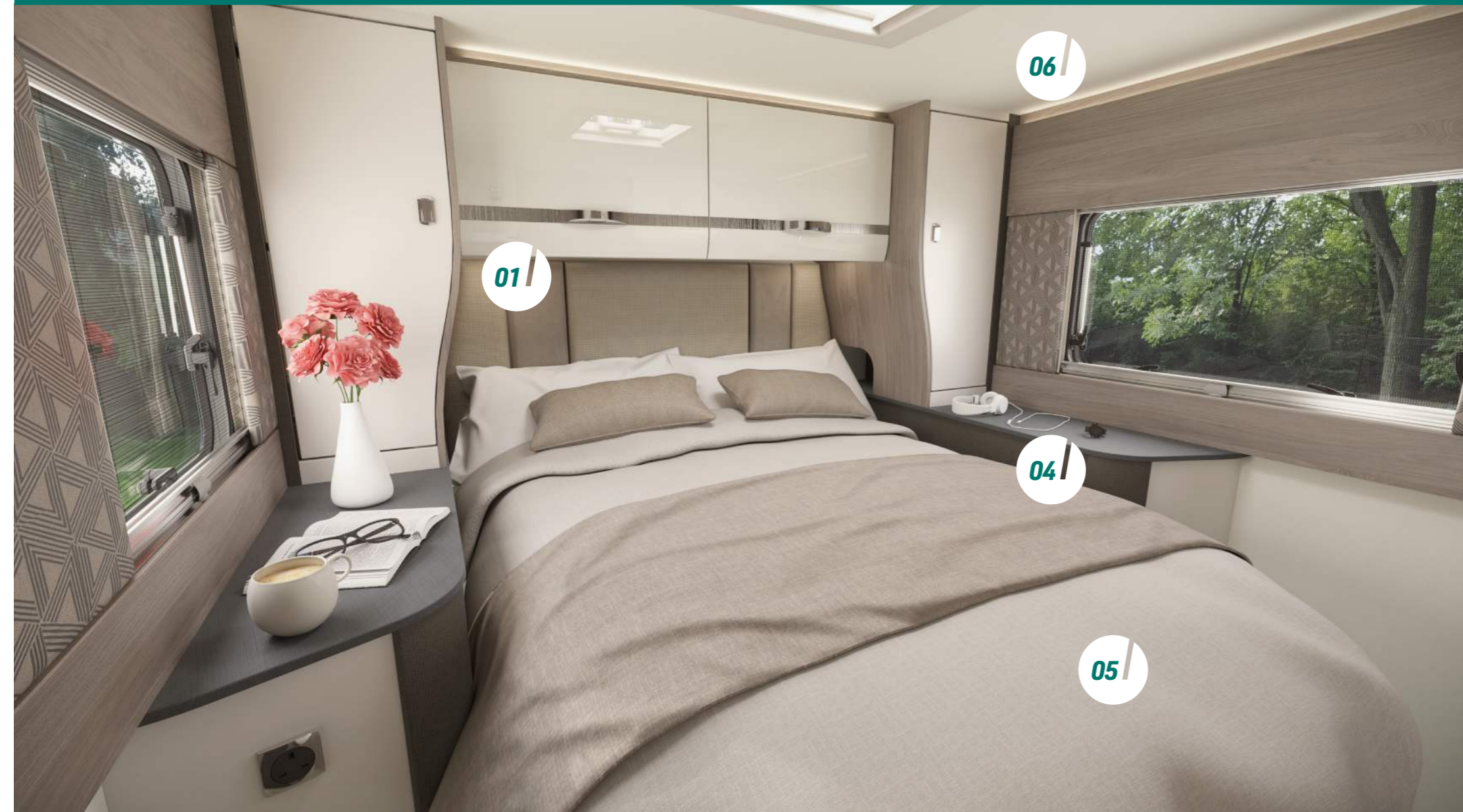
ESCAPE PRACTICALITY

- 01. Thetford oven and grill, three burner gas hob with electric hotplate (all with electronic ignition)
- 02. Tall dual hinged slimline 133 litre Dometic fridge freezer
- 03. Mapa electric rise and fall table
- 04. Dual fuel Truma combi boiler for excellent heating efficiency
- 05. Digital programmable controller for heating and hot water
- 06. Slate Weft laminate kitchen worktop with textured finish and durable stainless-steel sink



CLICK HERE FOR A FULL FEATURE LIST

www.swiftgroup.co.uk/escape



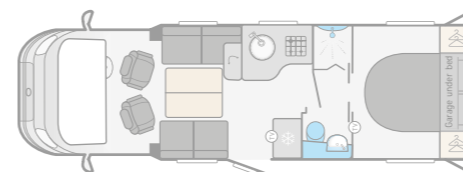
ESCAPE STYLE AND SUBSTANCE

- 01. Soft and atmospheric ultra-low LED lighting
- 02. Boutique style washroom
- 03. Lounge bench seat cushions and bed mattresses supported by beech slats for extra comfort
- 04. Ergonomically contoured bedding and sumptuous fabrics for increased comfort
- 05. Exclusive Duvalay Duvalite Alto mattress
- 06. Increased ceiling height to 2100mm



CLICK HERE FOR A FULL FEATURE LIST

www.swiftgroup.co.uk/escape



CLICK HERE
TO CHOOSE
YOUR LAYOUT

swiftgroup.co.uk/escape/technical

- 01.** Fiat chassis cab in Iron Grey Metallic, with body coloured bumper and silver grille trim
- 02.** Streamlined aerodynamic profile with stylish exterior graphics scheme coordinated with cab
- 03.** Euro 6D Final 140bhp, 2.2 litre engine with 6-speed manual gearbox and ESC and Eco pack
- 04.** Wide habitation door (600mm) with window, flyscreen, bin, umbrella stand and central locking
- 05.** 100W solar panel
- 06.** Bike rack fixing rails fitted to the rear, so you're ready for an adventure (excludes 674)
- 07.** AL-KO galvanised steel chassis
- 08.** Underfloor mounted 90 litre fresh water and 68 litre waste water tanks with level sensors
- 09.** Rear garage with lighting, heating, sockets and hanging provision, with access doors on both sides and exterior access locker door in to bed box*

*Model specific

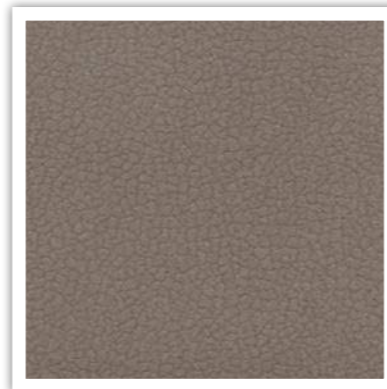


ESCAPE FABRIC SCHEME

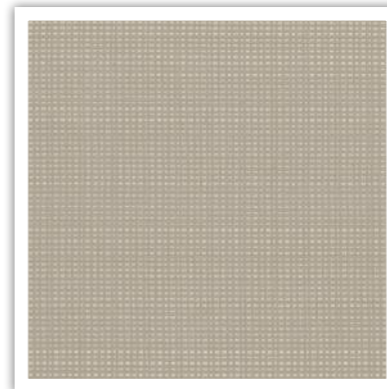
Within the Escape range the Calipso fabric scheme comes as standard.



SEATING



CUSHIONS



WALLBOARD





SMART is the basis of our intelligent construction system, used across our entire motorhome range. Strong, Modern, Aerodynamic, Resilient and Tested, you can be assured your Swift caravan is a high quality engineered product.



STRONG

The Strong timberless body frame uses 'PURE', a tough, hard polyurethane based product that is totally impervious to water and has been proven through use.



MODERN

The SMART construction system uses Modern materials and has been developed to ensure the exterior profiles maintain the Modern desirable looks our motorhomes are renowned for.



AERODYNAMIC

We continue to lead the way in Aerodynamics using Computational Fluid Dynamics to help shape the bodyshell for better fuel consumption.



RESILIENT

All fixings are made into the 'PURE' material to a pre-defined depth. 'PURE' is totally impervious to water and has no veins. This means there is no passage for water from the outer skin, making the motorhome highly Resilient to moisture.



TESTED

Extensive safety and durability Testing at the Millbrook track, and cold chamber Testing down to minus 15°C and beyond, puts prototypes through conditions most products will never have to experience in a lifetime; all part of the Swift ethos to deliver the best products.

HAIL RESISTANT GRP ROOF

Woven GRP outer surface provides greater durability from the elements.

GRP SIDEWALLS

Balanced panel side walls with GRP outer and inner skins. GRP is more impact resistant than aluminium and can be easily repaired, ensuring long lasting good looks and helping protect your investment for the future.

FLOOR CONSTRUCTION

'Sandwich' floor construction with ply upper, high rigidity Styrofoam core and GRP outer skin to provide greater durability from the elements.





ESCAPE



VIEW & DOWNLOAD YOUR COMPLETE RANGE OF SWIFT BROCHURES HERE:

swiftgroup.co.uk/buy/brochures/



FIND YOUR NEAREST DEALER HERE:

swiftgroup.co.uk/find-a-dealer/

DISCLAIMER

This brochure does not constitute an offer by Swift Group Limited (Swift). Swift reserves the right to alter specifications and prices at any time as materials and conditions demand. Distributors and dealers sell Swift products on their own account and not as agents of Swift. Accordingly, they have no authority to bind Swift or to make any representation or undertaking whatsoever on behalf of Swift. All props are for photographic purposes only and are not included in the specification. Models shown may be fitted with optional extras. Issued September 2022.

CARAVANS • MOTORHOMES • HOLIDAY HOMES - MADE IN BRITAIN BY SWIFT

LOVE LIFE
LOVE SWIFT